

PSYC 3140 (P): ABNORMAL PSYCHOLOGY
Faculty of Health
Department of Psychology
York University, Winter 2013

Course Director: Bramilee Dhayanandhan
Email: bramilee@yorku.ca
Office: 5022G TEL
Office Hours: By appointment in 5022G TEL
Secretary: Agnes Levstik: alevstik@yorku.ca, BSB 281

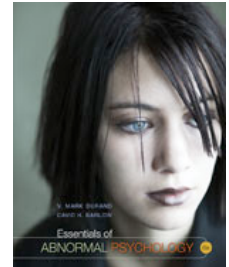
Graduate Teaching Assistants:

Deborah Kanter (dkanter@yorku.ca)	Jessica Jeong (jjeong@yorku.ca)
Office Hours: Tuesdays; 12:00pm-1:00pm	Office Hours: Tuesdays; 9:00am-10:00am
Location: 5022G TEL	Location: 5022J TEL
Students A-L	Students M-Z

Lectures: Fridays 8:30am-11:30am; Vari Hall D
Term: Winter term 2013

Required Textbook:

Durand, V.M., & Barlow, D.H. (2012). *Essentials of Abnormal Psychology, 6th Edition*



Course Description:

This course is designed to provide a comprehensive introduction to the nature, etiology, diagnostic classification, and treatment of psychopathology. Students will be given an overview of historical and theoretical conceptualizations of 'abnormal' or 'disordered' behaviour, and then delve into current classifications of major psychological disorders including anxiety, depression, schizophrenia, personality disorders, eating disorders, and substance use disorders. Psychopathology will be discussed within a bio-psycho-social framework to support an integrative understanding of the nature of human behaviour. Lectures will be complemented by in-class discussions, assigned textbook readings, reflective exercises, film clips, and case study material.

Course Learning Objectives:

- To provide students with an integrative overview of the field of abnormal psychology and major psychological problems and disorders;
- To familiarize students with the multiple causes of psychopathology as understood from biological, psychological, and social perspectives;
- To discuss intervention and prevention strategies for psychological disorders;
- To help students critically evaluate current socially constructed notions about abnormal psychology as well as current myths and stereotypes.

Prerequisite / Co-requisite: PSYC 1010 6.0 with a minimum grade of C

Attendance:

Attendance at lectures and participation in learning activities is strongly encouraged. Your insights, questions, and participation in lecture material will not only support the consolidation of knowledge around learning material, but also expand the perspectives of all class members. Class exercises will be conducted intermittently throughout the semester. Students will receive participation points for in-class completion of these exercises for a total of 5% towards your final grade. Exams will cover material from the textbook **and** lectures. Powerpoint slides will be available prior to each lecture to provide a skeleton of lecture content, but will in no way cover all of the information presented that students will in turn be expected to know for tests/exams.

Moodle:

Students are responsible for checking <https://moodle.yorku.ca/> regularly to obtain information pertaining to lectures, tests, and assignments. Powerpoint slides containing an outline of lecture material will be posted on Moodle the day before each lecture. Students are encouraged to print slides prior to each class and use them as a base from which to understand and follow lecture material. Exam and assignment grades will also be posted through Moodle.

Evaluation:

Students will be evaluated on the basis of 2 non-cumulative midterm tests, 1 assignment, 5 in-class exercises, and 1 cumulative final exam. The final grade for the course will be based on the following items weighted as indicated:

Midterm Exam 1:	25%	(February 1 st)
Midterm Exam 2:	25%	(March 8 th)
Assignment:	20%	(March 22 nd)
In-Class Exercises:	5%	(Intermittently throughout semester)
Final Examination:	25%	(During April exam period, TBA by Registrar's office)

Midterm and Final Exams:

Midterm exams will be *non-cumulative* and consist of multiple-choice questions and two short-answer questions. The final exam will be *cumulative*, with emphasis on untested material in the latter portion of the course, and will consist of multiple-choice questions only. Midterm and final exam questions will be drawn from lecture material, in-class exercises, videos, and assigned textbook readings.

In-Class Exercises:

Periodically throughout the term, students will have the opportunity to complete brief in-class exercises designed to consolidate knowledge and encourage reflective thinking. Students are required to complete and submit the assigned exercise during class to receive participation marks towards their final grade. A total of 5 exercises will be distributed intermittently throughout the term, each worth 1% (for a total of 5%).

Assignment:

The assignment is designed to help students develop a more in-depth understanding of social, cultural, biological, and psychological factors associated with major psychological disorders, and also the role that media and society play in influencing and perpetuating certain myths and stereotypes that may be associated with mental illness. Students will be required to view a film (from a list distributed in class) and compose a clinical formulation of a major character within the movie, as well as comment on the accuracy of the film's depiction of mental illness based on what they have learned in the course. The assignment will be maximum 5 pages in length, and students are encouraged to consult APA style guidelines (5th or 6th edition) as necessary. A full description of the assignment will be distributed and discussed in class.

Assignment Submission:

Proper academic performance depends on students doing their work not only well, but on time. Accordingly, assignments for this course must be received on the due date specified for the assignment. Assignments are to be handed in during class on the specified due date, or to the course secretary (Agnes Levstik, BSB 261). Please ensure that your full name, student number, course name, and instructor name are **clearly noted** on the first page of your assignment.

Lateness Penalty:

Assignments received later than the due date will be penalized 5% per day that the assignment is late. Exceptions to the lateness penalty for valid reasons such as illness, compassionate grounds, etc., may be entertained by the Course Instructor but will require supporting documentation (e.g., a doctor's letter).

Grading:

The grading scheme for the course conforms to the 9-point grading system used in undergraduate programs at York (e.g., A+ = 9, A = 8, B+ = 7, C+ = 5, etc.). Assignments and tests* will bear either a letter grade designation or a corresponding number grade. For a full description of York grading system see the York University Undergraduate Calendar: <http://calendars.registrar.yorku.ca/2010-2011/academic/index.htm>

Percentage	Letter Grade
90-100	A+
80- 89	A
75- 79	B+
70- 74	B
65- 69	C+
60- 64	C
55- 59	D+
50- 54	D
(Marginally below 50%) Marginally Failing	E
(Below 50%) Failing	F

Policy on Missed Exams:

1. Students are expected to write each test on the dates specified. If you miss a test for *no documented reason(s)*, you will receive a *grade of zero*.
2. If you have a legitimate reason (e.g., death in the family, severe illness, etc.) for being excused from a test/exam, and have documentation to verify your absence you may take a make-up test/exam in lieu of the missed test/exam.
3. Within 48 hours of the missed exam, students **must** contact the course instructor. In this email, please (a) outline the reason for your absence, and (b) confirm that you have medical or other relevant documentation to support this reason. Be sure to note your full name and student number in the subject header of your email.
4. Please note that there will be one set date for the make-up test/exam. If both exams are missed, students will have to retake the course unless they successfully petition.
5. Please also note that if you miss a test, regardless of your reason, you have waived the right to have a specific percentage of graded feedback available to you prior to the drop date.
6. Note also that deferred final exams are held on a single common date determined by the Department of Psychology. No individualized testing is available unless arranged formally through one of the offices at the University (e.g., Counselling and Disability Services- CDS).
7. If you produce a valid medical document, signed by a physician, stating that you were medically unable to take the exam/test for a specific time period, you will be able to take a makeup exam/test. You will need to have your doctor complete the attending physician's statement found at <http://www.registrar.yorku.ca/exams/deferred/>. This should be brought to the makeup exam. If you miss an exam/test for non-medical reasons, you still must produce supporting documentation (e.g., death certificate, obituary notice, automobile accident report, airline ticket for emergency travel, etc.).
8. Once you have contacted the course instructor and the TA, and have verified that you have valid medical documentation, your TA will confirm the date of the makeup examination. It is your responsibility to find out the necessary information pertaining to the date and location of the makeup exam, and to ensure that you are set to write the makeup exam.

PSYC 3140P LECTURE SCHEDULE

Date	Topic	Readings
January 11	<ul style="list-style-type: none"> • Abnormal Behaviour in Historical Context • Bio-Psycho-Social Approach to Understanding Psychopathology • Diagnosing Psychological Disorders 	Ch. 1 Ch. 2 Ch. 3 (pg 84-91 only)
January 18	<ul style="list-style-type: none"> • Anxiety Disorders • The Influence of Stress on Psychological Disorders 	Ch. 4
January 25	<ul style="list-style-type: none"> • Mood Disorders • Suicidal Behaviours 	Ch. 6
February 1	<ul style="list-style-type: none"> • Sexual and Gender Identity Disorders 	Ch. 9
February 8	<ul style="list-style-type: none"> • Midterm Exam 1 – 25% 	
February 15	<ul style="list-style-type: none"> • Eating Disorders • Sleep Disorders 	Ch. 8
February 22	<ul style="list-style-type: none"> • <i>Reading Week – no class</i> 	
March 1	<ul style="list-style-type: none"> • Somatoform & Dissociative Disorders • Personality Disorders 	Ch. 5 Ch. 11
March 8	<ul style="list-style-type: none"> • Substance Related Disorders • Impulse Control Disorders 	Ch. 10
March 15	<ul style="list-style-type: none"> • Midterm Exam 2 – 25% 	
March 22	<ul style="list-style-type: none"> • <i>Guest Speaker:</i> Dr. Joel Goldberg: Schizophrenia 	Ch. 12
March 29	<ul style="list-style-type: none"> • <i>Good Friday – no class</i> 	
April 5	<ul style="list-style-type: none"> • Developmental Psychopathology • Interventions • Ethical and Legal Issues • Assignment Due – 20% 	Ch. 13 Ch. 14
TBA	<ul style="list-style-type: none"> • Final Examination – 25% 	

*The date of final exam will be determined by the Registrar's office- see www.yorku.ca for schedule

Other Important Dates:

Last date to enroll without permission of course instructor – January 21

Last date to enroll with permission of course instructor – February 4

Last date to drop courses without receiving a grade – March 15

IMPORTANT COURSE INFORMATION FOR STUDENTS

All students are expected to familiarize themselves with the following information, available on the Senate Committee on Academic Standards, Curriculum & Pedagogy webpage:

- Senate Policy on Academic Honesty and the Academic Integrity Website
- Ethics Review Process for research involving human participants
- Course requirement accommodation for students with disabilities, including physical, medical, systemic, learning and psychiatric disabilities
- Student Conduct Standards
- Religious Observance Accommodation

- Code of Student Rights and Responsibilities
 - <http://www.yorku.ca/secretariat/policies/document.php?document=202>
- York University Secretariat Home:
 - <http://www.yorku.ca/secretariat/index.html>
- Important Dates from the Registrar:
 - <http://www.registrar.yorku.ca/enrol/dates/>
- Policy on Accommodation for students with disabilities:
 - <http://www.yorku.ca/secretariat/policies/document.php?document=68>
- Please read the information on plagiarism and academic honesty:
 - <http://www.yorku.ca/academicintegrity/students/index.htm>
 - <http://www.yorku.ca/univsec/policies/document.php?document=69>
 - As a student at York you are responsible for understanding the repercussions for plagiarism, cheating, and academy dishonesty. Cheating on exams is strictly prohibited and exams will be monitored carefully. If you have any concerns or doubts about whether an action is inappropriate, please approach the course director or TAs.